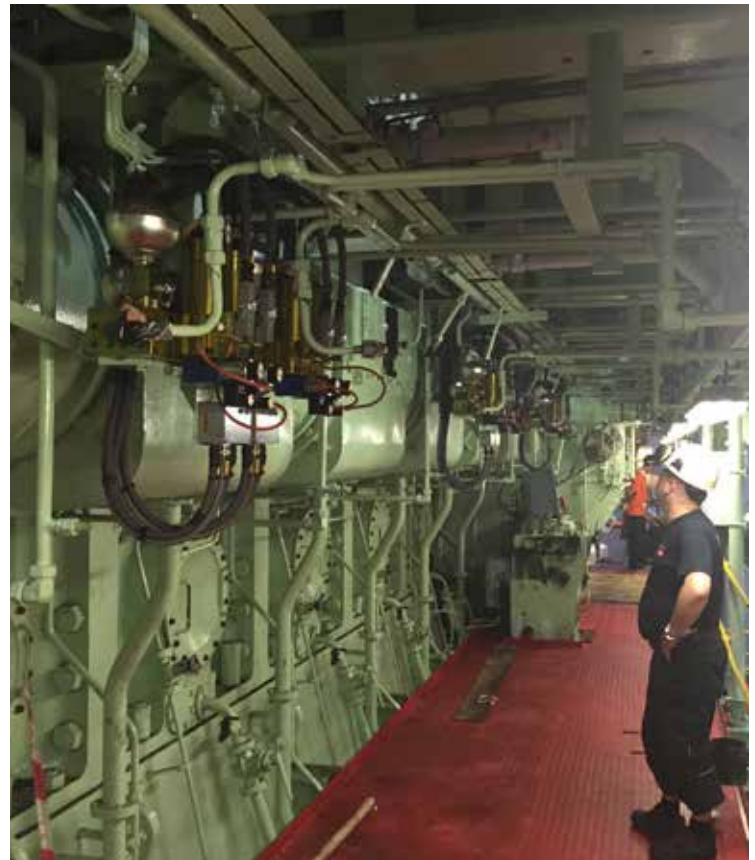




ROTATING COMPONENT SERVICES



ROTATING COMPONENT SERVICES

With a conveniently located, fully equipped workshop and a two dozen strong organization of craftsmen, specialists and engineers, BWSC Panama S.A. is able to provide a variety of services to fleet operators frequently crossing the Panama Canal.

As fleet operators often design and outfit series of vessels with similar engines and auxiliary equipment to streamline subsequent services, BWSC Panama S.A can provide rotating component services not offered by any other providers in the region.

Rotating component services may be based upon time and material service rates or on individually designed lump sum turnkey contract. The choice rests solely with the client's preferences.

Examples of rotating component services:

- rotating cylinder heads (four-stroke applications): service, rehabilitate and maintain ample supply stock to be on hand for owner's requests
- fuel pumps (two and four-stroke applications): service, rehabilitate and maintain ample supply stock to be on hand for owner's requests
- fuel valves (two and four-stroke applications): service, rehabilitate and maintain ample supply stock to be on hand for owner's requests
- liners (four-stroke applications): honing, cleaning and maintaining ample supply stock to be on hand for owner's requests
- piston crowns (four-stroke applications): maintain ample supply stock to be on hand for owner's requests
- turbocharger cartridge (two and four-stroke applications): full service including vibration stand and maintain ample supply stock to be on hand for owner's requests
- scavenge/charge air cooler inserts (two and four-stroke applications): service, rehabilitate and maintain ample supply stock to be on hand for owner's requests
- electrical motors: coordination of rewinding and service. maintain ample supply stock to be on hand for owner's requests

Additional services:

- rapid mobilization regimes and on-board emergency services of highly qualified staff contingencies
- coordination with local OEM suppliers and service facilities to undertake system emergency repairs/damage control
- coordination of pre-docking surveys to establish long term solutions to emergency repairs
- coordination with BWSC A.S. for generator services, governor controls, transformer, turbine and WHR system, and other services