

KOTU POWER STATION

GAMBIA UTILITIES CORPORATION



BWSC 

Kotu New Power Station

is built to increase the power supply to the capital, Banjul. The diesel engine selected is the most reliable of the 2-stroke design.

The main features are:

Diesel engine:

MAN-B&W Type 8L42MC-S,
output at flywheel 6.8 MW, 166.7 rpm

Alternator:

Jeumont-Schneider Type SAT 409/48/36,
output at terminals 8.2 MVA, 50 Hz, $\text{pF} = 0.8$

Auxiliaries:

Heavy fuel oil separators
Exhaust gas boiler
Emergency diesel generator set

Control systems:

Supervision, control and data acquisition system (SCADA)
Programmable Process Control System (PPC)
Database system for maintenance administration and spare parts control

Tank Systems:

Heavy fuel oil storage
At the power station: 2 tanks of 3500 m³ each
At the depot in Banjul: 1 tank of 3500 m³ with a loading bay for tanker trucks and with 1500 m of supply pipe line connecting Banjul Port

Interconnector:

The power station is connected to the distribution system in Banjul by 16 km of overhead line, 33kV and 2 km overhead line, 11 kV.

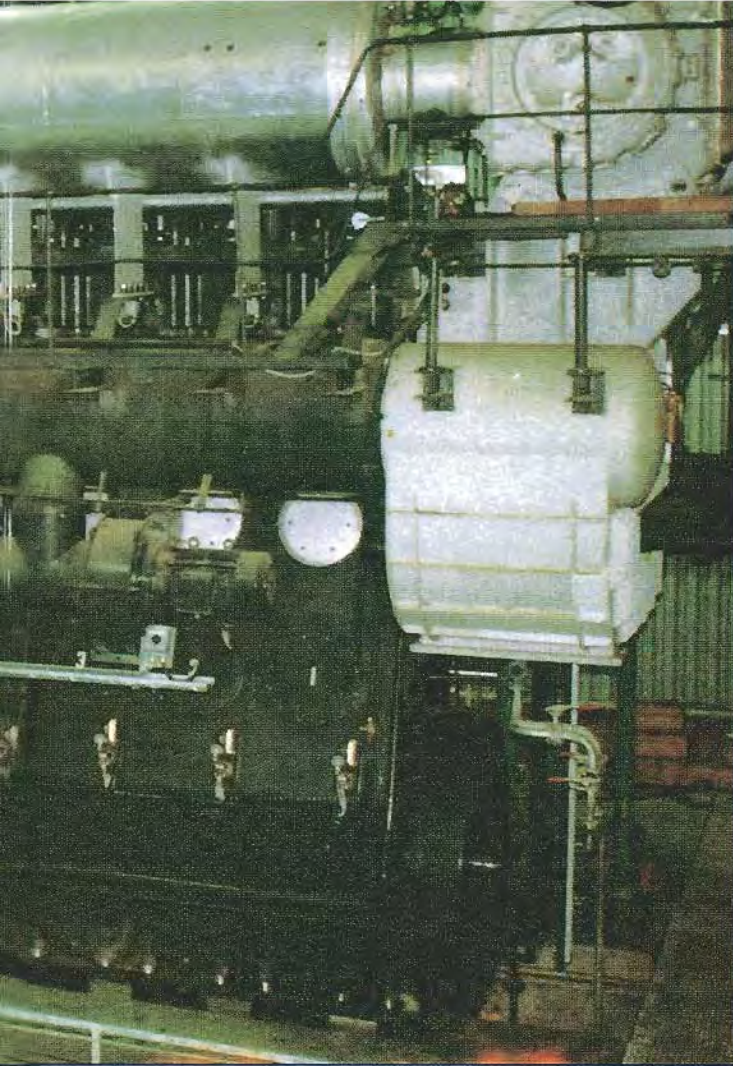


MAN B&W Diesel A/S

MAN B&W is the world's leading designer of 2-stroke low speed, crosshead, uniflow scavenged diesel engines. The company's activities cover all areas where such engines are used. These areas of application comprise propulsion of all kinds of ships for the high seas as well as inland navigation and for stationary power generation.

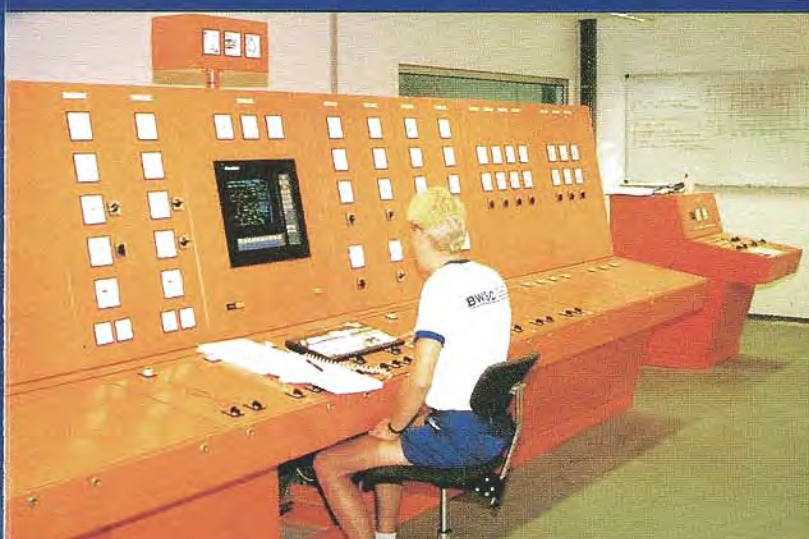
MAN B&W 2-stroke engines are built by 23 licensees in the following countries, among others: Argentina, Brazil, China, Denmark, Germany, Indonesia, Japan, Korea, Poland, Spain, the UK, USSR, and Yugoslavia.





Burmeister & Wain Scandinavian Contractor A/S (BWSC), a Danish registered company specializing in the design, engineering, purchasing, forwarding, erection and commissioning of diesel power plants world-wide.

For the Kotu New Power Plant BWSC has as main contractor designed, built, and delivered the turnkey plant and through an extensive training program has familiarized the operator and maintenance personnel with the installed equipment.



JEUMONT-SCHNEIDER-INDUSTRIE

manufactures, erects, and services generators for diesel, steam, gas, and hydro power stations all around the world.

A large range of standard or specific machines has been installed in Europe, Africa, America, Asia totalling more than 10 million kVA.

JEUMONT-SCHNEIDER-INDUSTRIE, a member of the **SCHNEIDER GROUP**, has the ability to provide a complete electrical service on a partnership basis to engineering companies specializing in the field of electricity generation.



BWSC 

**Diesel Power Plants
Turnkey Contracting
& Service Contracts**

**Burmeister & Wain
Scandinavian Contractor A/S**

35, Gydevang
DK-3450 Allerød
Denmark

Telephone: +45 48 140022
Telefax: +45 48 140150
Telex: 31329 BWSC DK



MAN B&W Diesel A/S

161, Stamholmen
DK-2650 Hvidovre
Copenhagen
Denmark

Telephone: +45 31 492501
Telefax: +45 31 492066
Telex: 16592 MANBW DK



Jeumont-Schneider-Industrie

Rotating Machines Department
27, Rue de l'Industrie
F-59460 Jeumont
France

Telephone: +33 27 699000
Telefax: +33 27 699251
Telex: 130000 F